

<h2 style="margin: 0;">Emergency Evacuation: Community</h2>
---

Procedure Number	005	Version 001
Submitted by:	MIKE JOSEPH	
Approved by:	HOA BOARD	ROB NICHOLS, Pres.
Last date revised:	1/22/09	
Date of Origination:	2/14/2008	
Date approved:	2/01/09	

**PURPOSE:**

This Operating Procedure provides the specific steps to provide for the safety and security of Montreux residents in the event an emergency situation is presented that affects the entire Montreux Community.

**REFERENCE:**

1. Emergency Evacuation Map
2. [WEB PAGE: Montreux Documentation Download](#)

**RESPONSIBILITY:**

1. On duty Security Staff and Management.
2. Property Manager.
3. Civil Emergency Agency, e.g., Fire Protection, Police, Paramedic.

**MATERIALS:**

1. Traffic control cones, markers, flares, etc.
2. Community Evacuation Route Maps for Homeowner Distribution and Emergency responders.

**FORMS and WEB PAGES:**

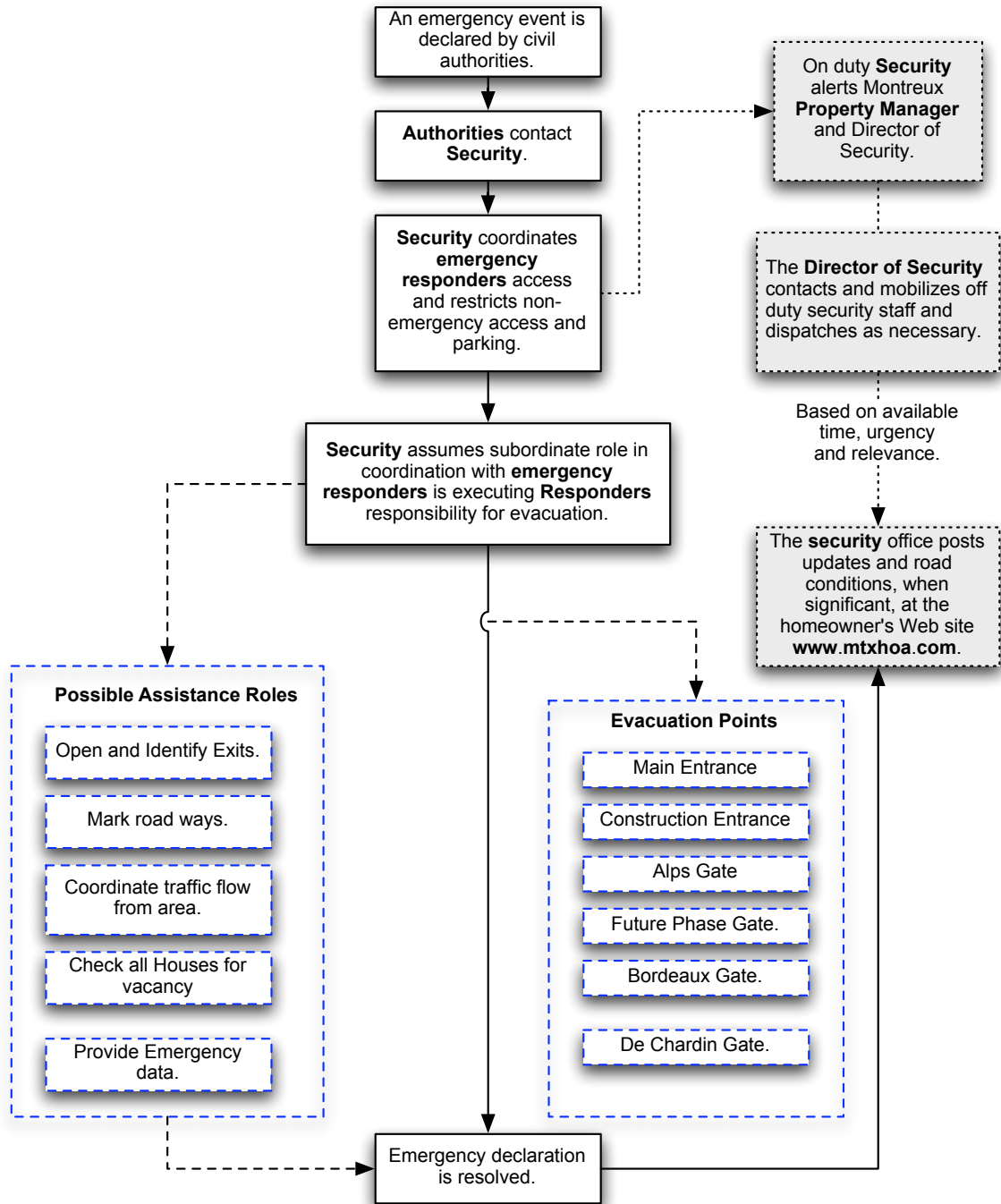
1. [WEB PAGE: Montreux Security: Present Conditions and Information](#)
2. [WEB PAGE: Montreux Security Emergency Contacts . Civil Authorities](#)
3. [WEB PAGE: Washoe County Emergency Alert System](#)
4. [WEB MAP LINK: Montreux Community](#)

**CONTACTS:**

	<b>Name</b>	<b>Phone</b>	<b>email address</b>	<b>WEB Site</b>
<i>Sierra Fire Protection and Paramedic</i>	Chris Ketring, Captian	849-1108 849-1636 (FAX)	<a href="mailto:cketring@washoe-county.us">cketring@washoe-county.us</a>	
<i>Property Manger</i>	Mike Joseph			
<i>On duty Security Management.</i>	Pete Christoffersen	849-9780 849-9782(FAX)		<a href="http://www.mtxhoa.com">www.mtxhoa.com</a>
<i>Web site support</i>				
<i>Montreux HOA Emergency Contacts</i>				<a href="http://www.mtxhoa.com/contact/emergency/">http://www.mtxhoa.com/contact/emergency/</a>
<i>Washoe County Sheriff's Office</i>		911 785-4629		

**Special Provisions and Guidelines:**

*None Identified.*



[WEB MAP LINK: Montreux Community](#)

